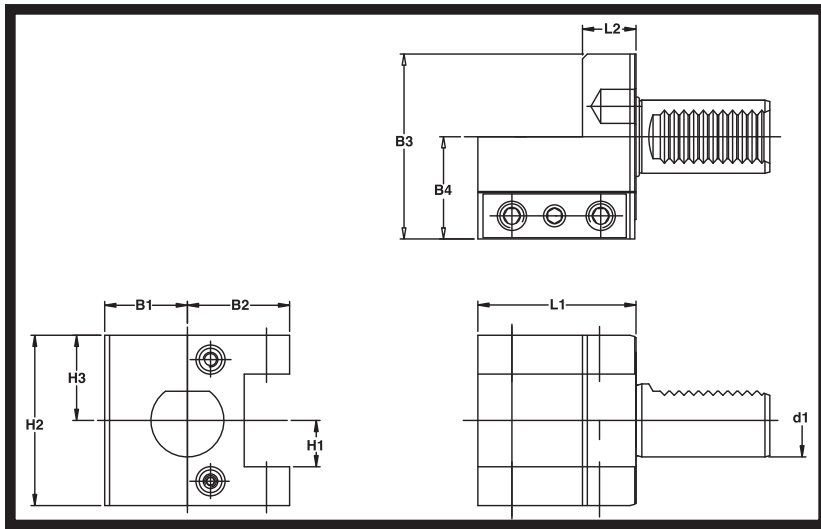




PM Facing Holder - Form C1

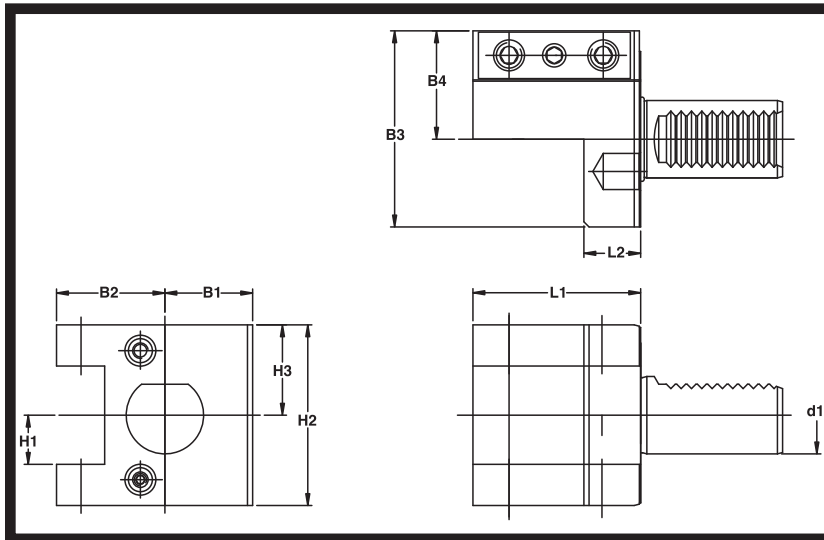
Right Hand Peripheral Mounted VDI



PART NUMBER	d ₁	B ₁	B ₂	B ₃	B ₄	H ₁	H ₂	H ₃	L ₁	L ₂
PM31.3020L	30	34	42	76	42	3/4	70	35	65	22
PM31.3020S	30	34	42	76	42	3/4	70	35	45	22
PM31.4025L	40	42.5	50	92.5	50	1	96	48	85	30
PM31.4025S	40	42.5	50	92.5	50	1	96	48	70	30

PM Facing Holder - Form C2

Left Hand Peripheral Mounted VDI



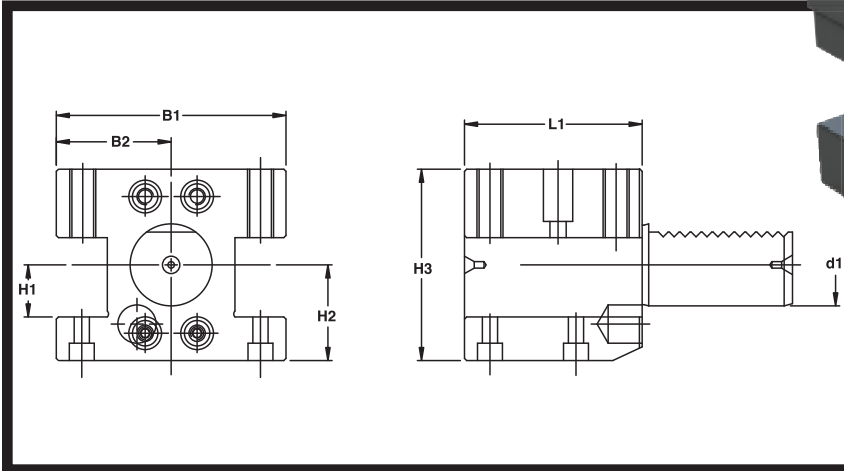
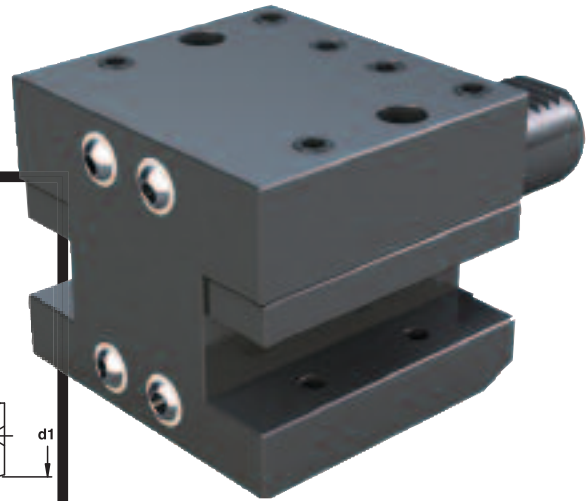
PART NUMBER	d ₁	B ₁	B ₂	B ₃	B ₄	H ₁	H ₂	H ₃	L ₁	L ₂
PM32.3020L	30	34	42	76	42	3/4	70	35	65	22
PM32.3020S	30	34	42	76	42	3/4	70	35	45	22
PM32.4025L	40	42.5	50	92.5	50	1	96	48	85	30
PM32.4025S	40	42.5	50	92.5	50	1	96	48	70	30





PM Double Square - Form D1

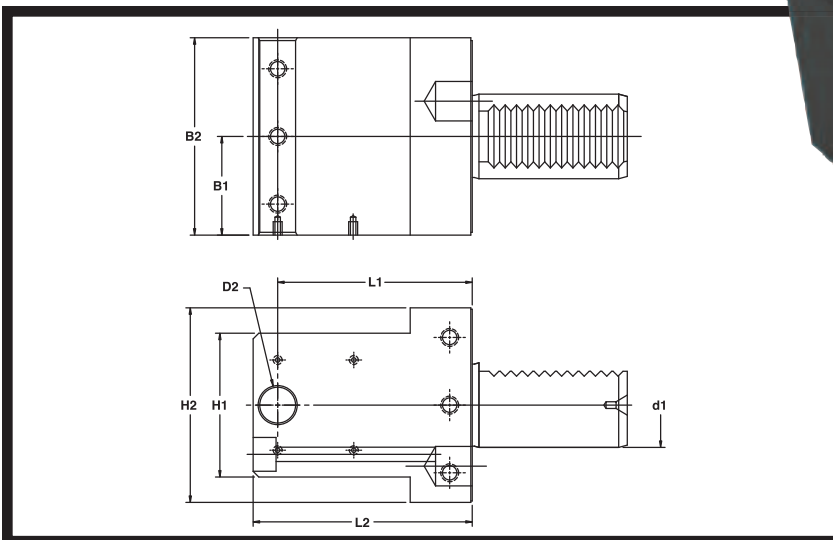
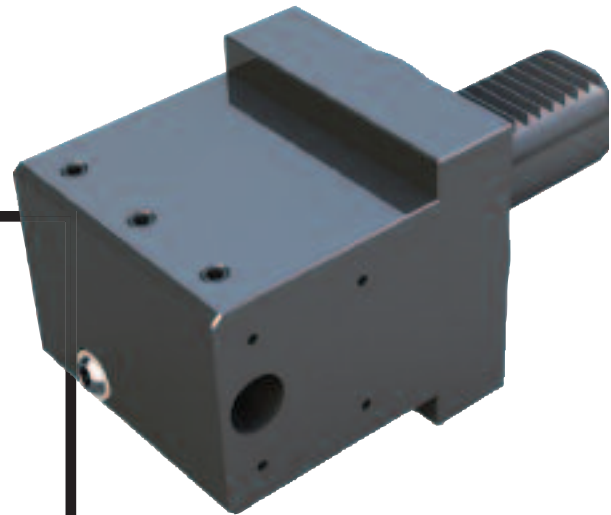
OD Holder Peripheral Mounted VDI



PART NUMBER	d ₁	B ₁	B ₂	H ₁	H ₂	H ₃	L ₁
PM41.3020	30	84	42	3/4	35	75	65
PM41.4025	40	120	60	1	48	96	85

PM Y-Axis Drill Holder

Peripheral Mounted VDI



PART NUMBER	d ₁	D ₂	B ₁	B ₂	H ₁	H ₂	L ₁	L ₂
PM59.3012D	30	1/2	35	70	51	69	69	77.7
PM59.4012D	40	1/2	42.5	85	75	96	78	103

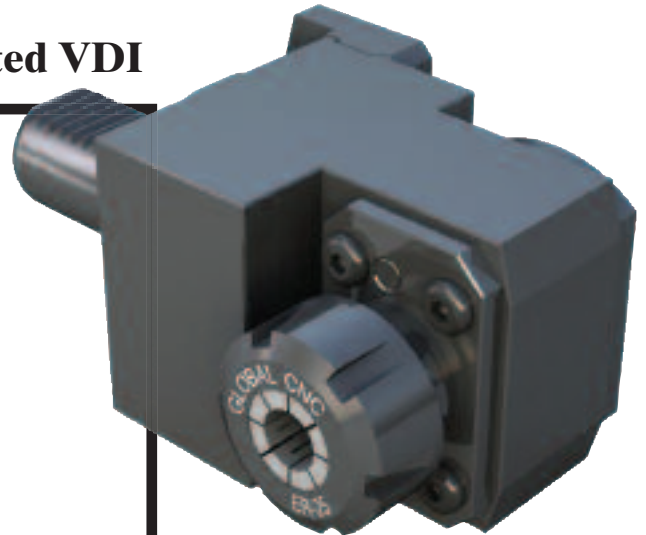
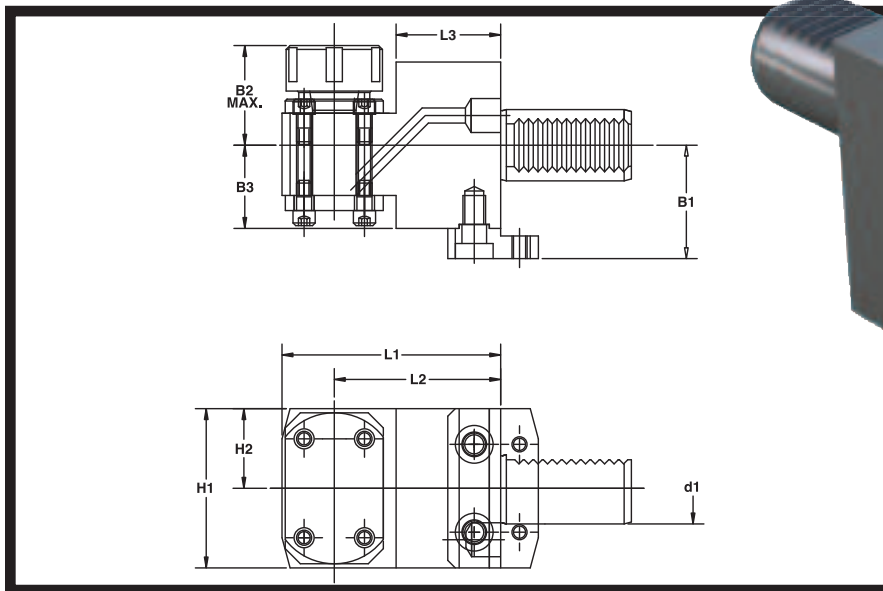
PERIPHERAL VDI





PM Collet Chuck

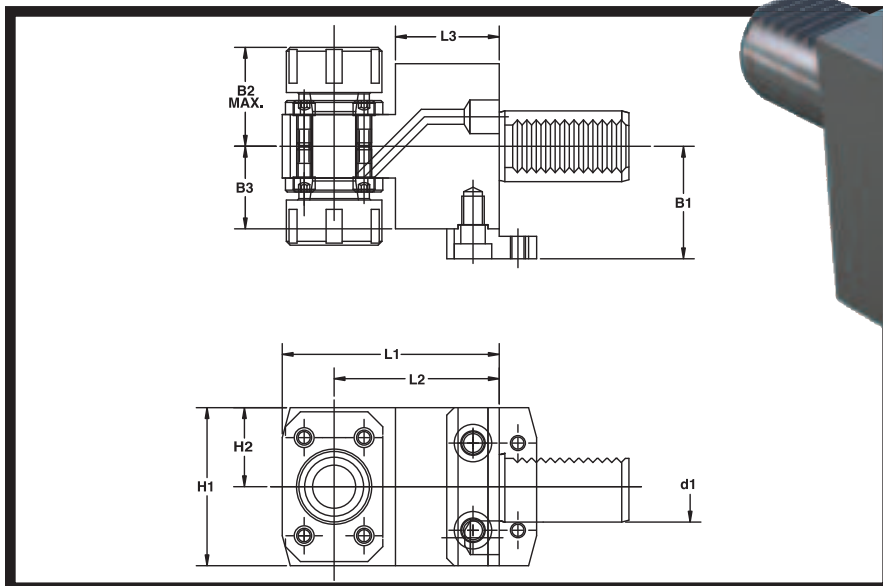
ER Style Right Hand Peripheral Mounted VDI



PART NUMBER	d ₁	B ₁	B ₂	B ₃	H ₁	H ₂	L ₁	L ₂	L ₃
PM53.3025ER	30	53	50.5	35	67	33.5	92	70	44
PM53.4032ER	40	72	57	42.5	96	48	125	100	65

PM Collet Chuck Double

ER Style Double Two Sided



PART NUMBER	d ₁	B ₁	B ₂	B ₃	H ₁	H ₂	L ₁	L ₂	L ₃
PM93.3025ER	30	53	50.5	35	67	33.5	92	70	44
PM93.4032ER	40	72	57	42.5	96	48	125	100	65

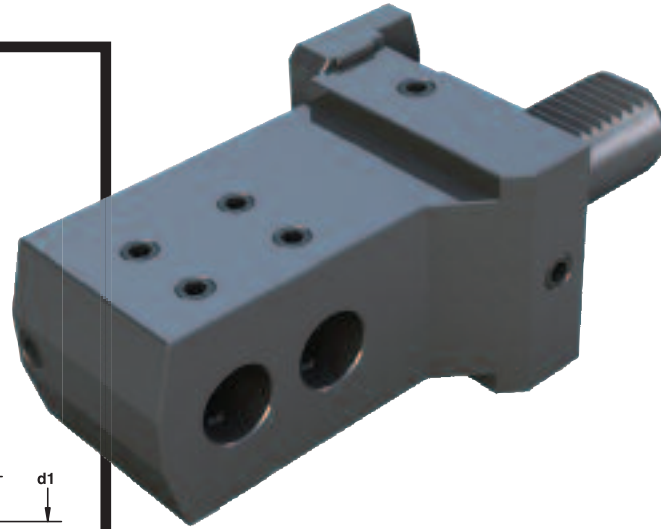
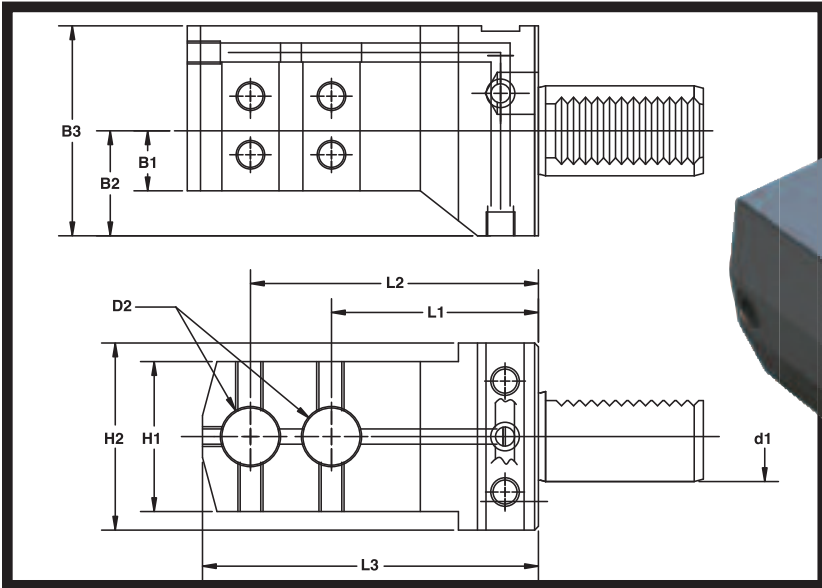
PERIPHERAL VDI





PM Double ID Boring Bar Holder

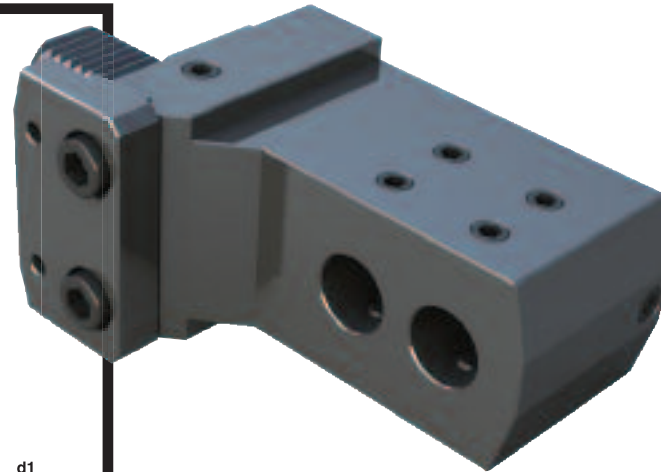
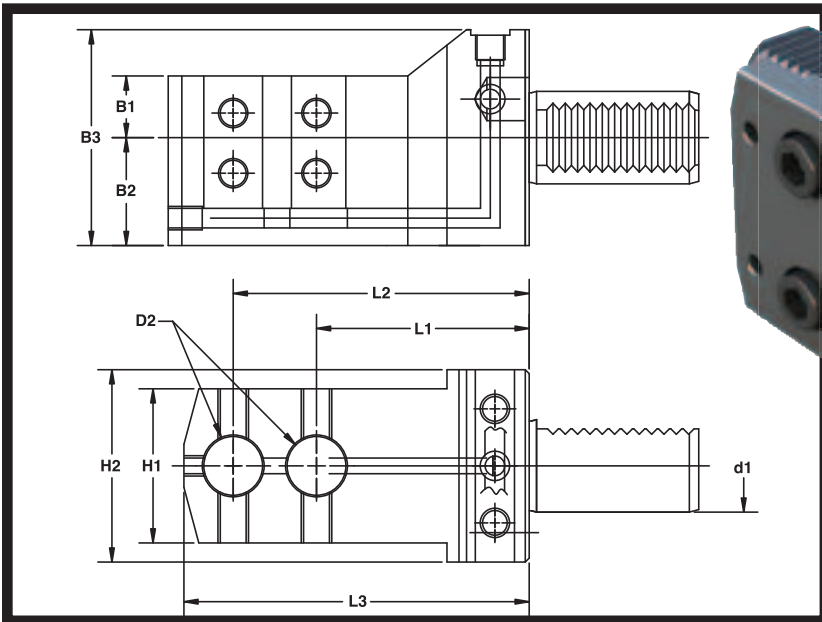
Right Hand Peripheral Mounted VDI



PART NUMBER	d ₁	D ₂	B ₁	B ₂	B ₃	H ₁	H ₂	L ₁	L ₂	L ₃
PM91.3020R	30	3/4	20	35	70	50	62	69	96	112
PM91.4025R	40	1	40	39	89	75	85	75	140	179

PM Double ID Boring Bar Holder

Left Hand Peripheral Mounted VDI



PART NUMBER	d ₁	D ₂	B ₁	B ₂	B ₃	H ₁	H ₂	L ₁	L ₂	L ₃
PM91.3020L	30	3/4	20	35	70	50	62	69	96	112
PM91.4025L	40	1	40	39	89	75	85	75	140	179

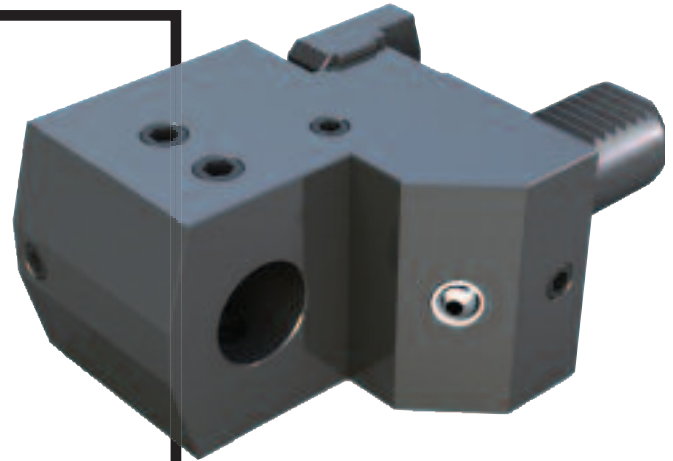
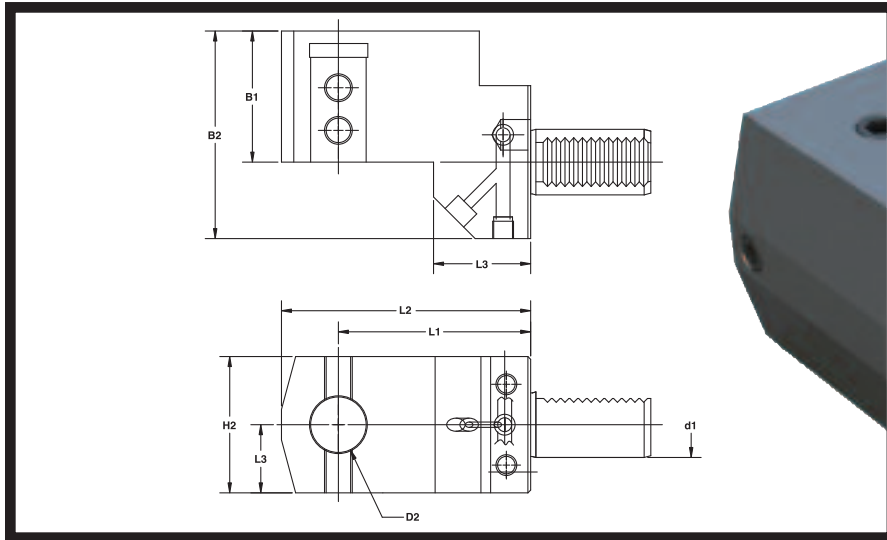
PERIPHERAL VDI





PM Offset ID Boring Bar Holder

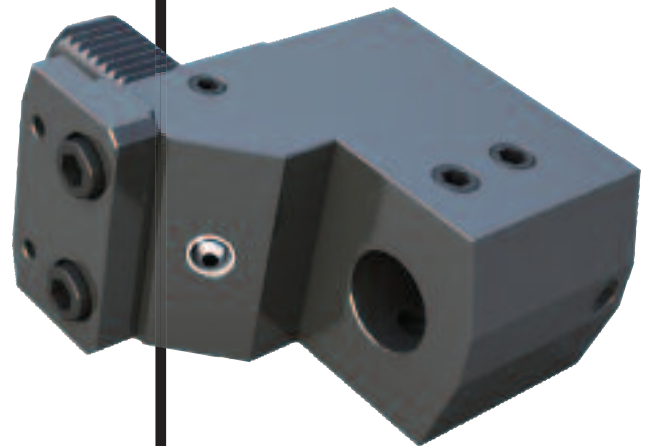
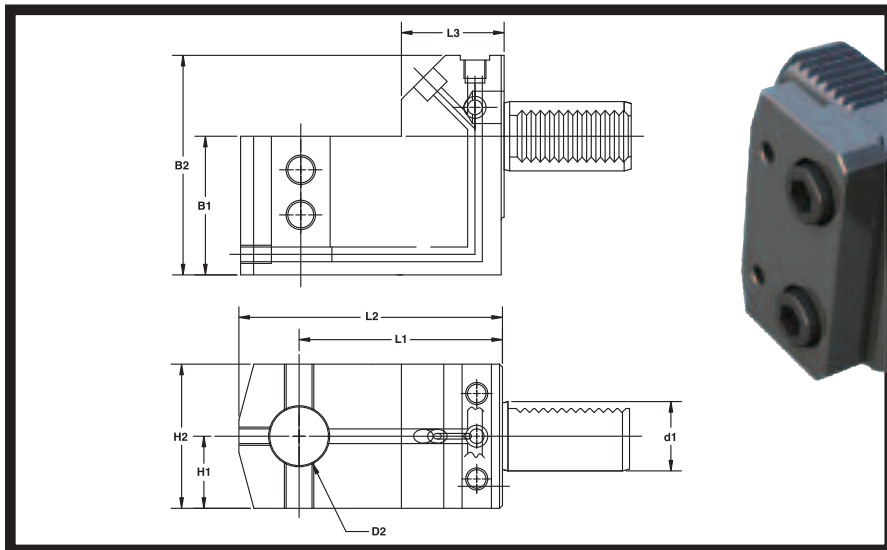
Right Hand Peripheral Mounted VDI



PART NUMBER	d ₁	D ₂	B ₁	B ₂	B ₃	H ₁	H ₂	L ₁	L ₂
PM56.3025RL	30	1	60	95	60	31	62	88	114
PM56.3025RS	30	1	60	95	60	31	62	70	96
PM56.4032RL	40	1¼	63	100	50	43	86	105	135
PM56.4032RS	40	1¼	63	100	50	43	86	85	115

PM Offset ID Boring Bar Holder

Left Hand Peripheral Mounted VDI



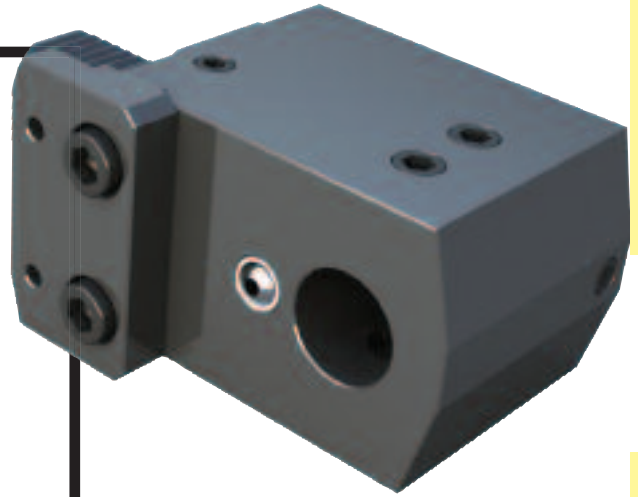
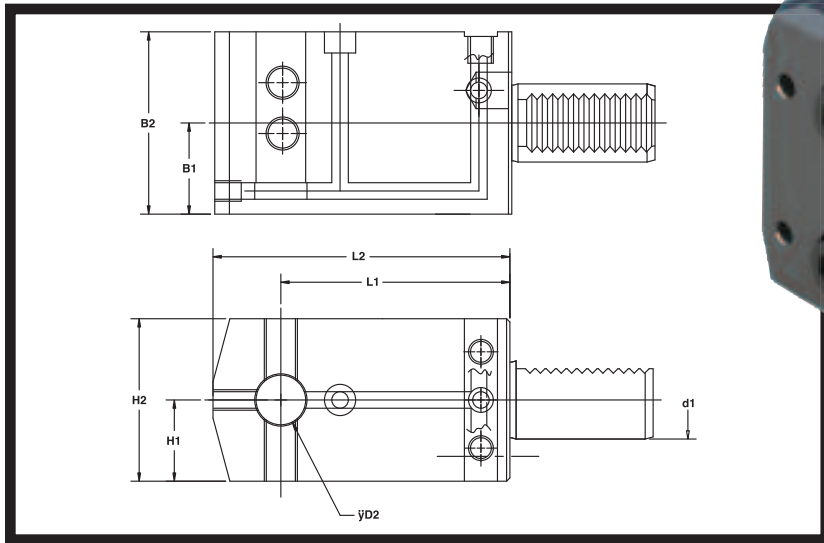
PART NUMBER	d ₁	D ₂	B ₁	B ₂	B ₃	H ₁	H ₂	L ₁	L ₂
PM56.3025LL	30	1	60	95	60	31	62	88	114
PM56.3025LS	30	1	60	95	60	31	62	70	96
PM56.4032LL	40	1¼	63	100	50	43	86	105	135
PM56.4032LS	40	1¼	63	100	50	43	86	85	115





PM Straight ID Boring Bar Holder

Left Hand Peripheral Mounted VDI



PERIPHERAL VDI

PART NUMBER	d ₁	D ₂	B ₁	B ₂	H ₁	H ₂	L ₁	L ₂
PM52.3020LL	30	¾	35	70	31	62	88	114
PM52.3020LS	30	¾	35	70	31	62	69	95
PM52.4025LL	40	1	43	86	42.5	85	140	179
PM52.4025LS	40	1	43	86	42.5	85	110	149

NEW CNC LATHE STYLE OILY



Use your CNC Lathe to Automatically Inject Coolant into the Bore Hole on your workpiece.

Never Manually Lubricate another workpiece again.

Uses Standard Cutting Oil.

Two Styles of Tips Provided.

When the Injector Tip is pressed against the opening of the drilled hole; a small amount of cutting oil will be dispersed. The distance of the push determines the volume. See Page J2 for more information.

